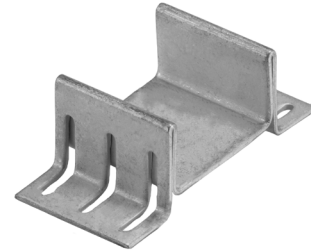




**MODEL:** HSS05-C20-SMT-TR | **DESCRIPTION:** HEAT SINK

**FEATURES**

- TO-220 package
- surface mount
- copper alloy
- tin plated



**MODEL**

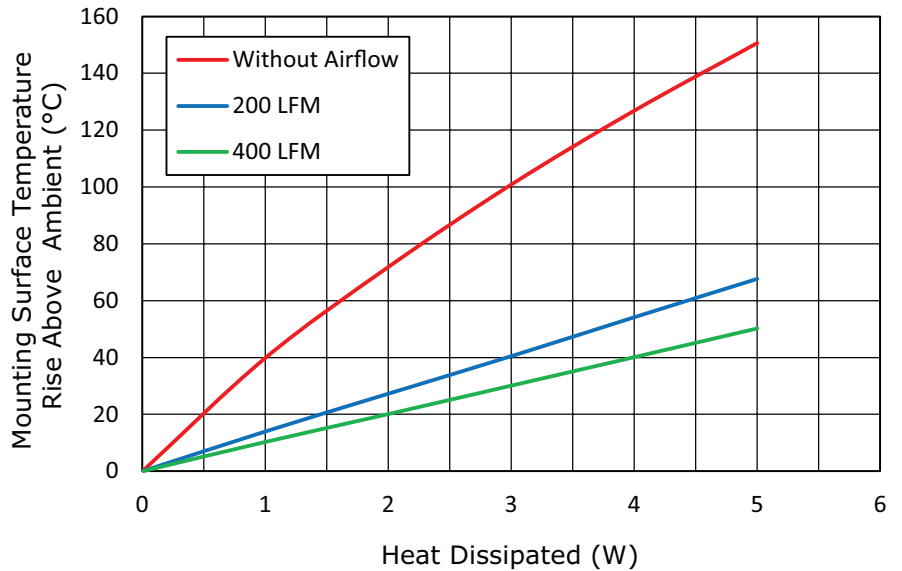
HSS05-C20-SMT-TR	thermal resistance <sup>1</sup>				power dissipation <sup>1</sup>
	@ 75°C ΔT, nat conv [°C/W]	@ 1 W, nat conv [°C/W]	@ 1 W, 200 LFM [°C/W]	@ 1 W, 400 LFM [°C/W]	@ 75°C ΔT, nat conv [W]
	32.69	39.9	14.00	10.3	2.29

Note: 1. See performance curves for full thermal resistance details.

**PERFORMANCE CURVES**

Power (W)	Heatsink Temperature Rise Above Ambient (ΔT = Ths - Ta) [°C]		
	Natural Conv.	200 LFM	400 LFM
0	0	0	0
1	39.9	14.0	10.3
2	71.9	27.3	20.1
3	100.9	40.5	30.1
4	126.9	54.2	40.1
5	150.7	67.7	50.2

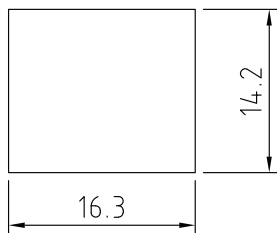
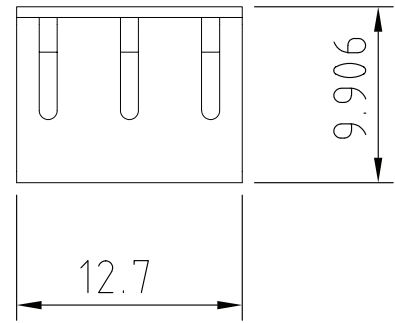
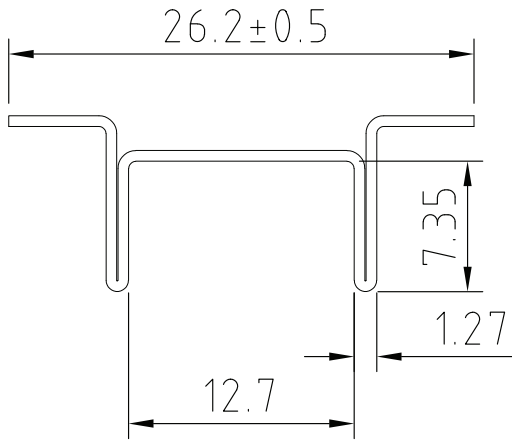
Ths: "hot spot" temperature measured on the heatsink  
Ta: ambient temperature



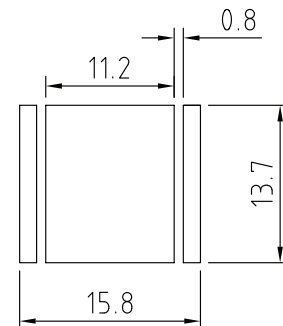
## MECHANICAL DRAWING

units: mm  
tolerance: ±0.5 mm

MATERIAL	C1100
FINISH	tin
THICKNESS	0.6 mm
WEIGHT	6.0 g



Recommended Copper Heat Spreader Drain Pad Layout  
Top View

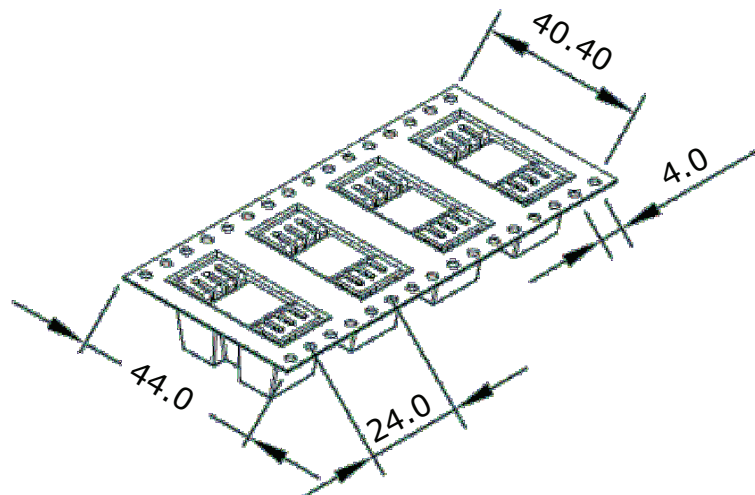


Recommended Solder Mask Opening  
Top View

## PACKAGING

units: mm

Reel QTY: 250 pcs per reel



## REVISION HISTORY

rev.	description	date
1.0	initial release	06/25/2021
1.01	logo, datasheet style update	08/05/2022
1.02	CUI Devices rebranded to Same Sky	09/12/2024

The revision history provided is for informational purposes only and is believed to be accurate.



Same Sky offers a one (1) year limited warranty. Complete warranty information is listed on our website.

Same Sky reserves the right to make changes to the product at any time without notice. Information provided by Same Sky is believed to be accurate and reliable. However, no responsibility is assumed by Same Sky for its use, nor for any infringements of patents or other rights of third parties which may result from its use.

Same Sky products are not authorized or warranted for use as critical components in equipment that requires an extremely high level of reliability. A critical component is any component of a life support device or system whose failure to perform can be reasonably expected to cause the failure of the life support device or system, or to affect its safety or effectiveness.

[sameskydevices.com](https://www.sameskydevices.com)