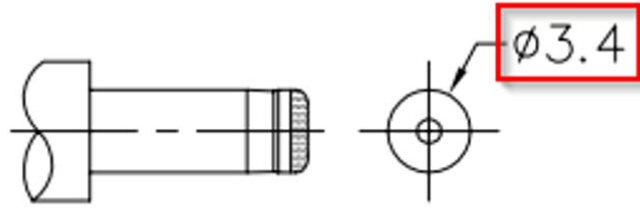
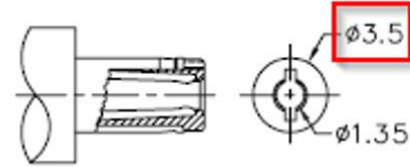


	MATERIAL	PLATING
center pin	copper	nickel
terminal 1	brass	tin
terminal 2	copper alloy	tin
terminal 3	brass	tin
plastic	PBT	

DESCRIPTION	MATERIAL	PLATING/COLOR
center pin	brass (H65)	nickel
terminal 1	brass	silver
terminal 2	bronze	silver
terminal 3	brass	silver
housing	PBT (UL94V-0)	black



MATING PLUG
Jack Insertion Depth: 9 mm



MATING PLUG
Jack Insertion Depth: 1.35 mm

SPECIFICATIONS

parameter	conditions/description	min	typ	max	units
rated input voltage			24		Vdc
rated input current			2.0		A



SPECIFICATIONS

parameter	conditions/description	min	typ	max	units
rated input voltage			30		Vdc
rated input current			3.0		A

Affected Date Code: 1/10/2023

Product Availability: Channel Availability mid Q4

F-723-001

Revision: A



Additional Information:

PCN Approval:

Operations/Quality

Rae Adams

Product Management

RI
