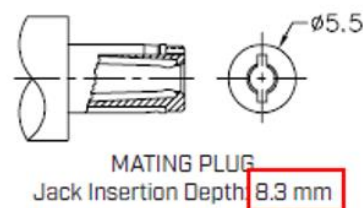
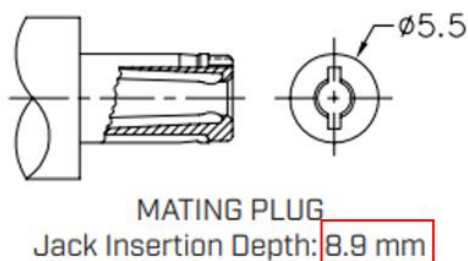
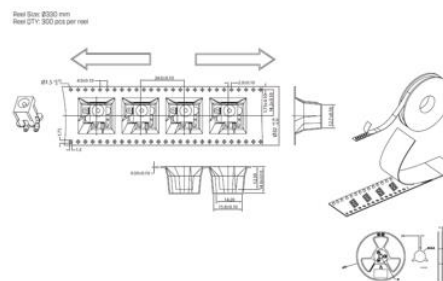
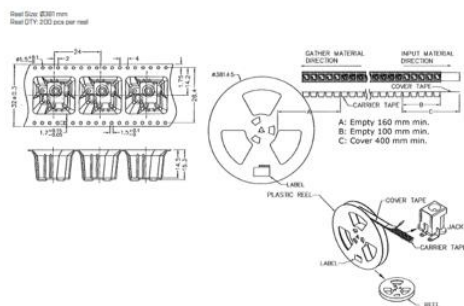


PREVIOUS CUI DEVICES DETAIL / IMAGE			NEW CUI DEVICES DETAIL / IMAGE		
	MATERIAL	PLATING		MATERIAL	PLATING/COLOR
center pin	brass	nickel	center pin	brass	nickel
terminal 1	brass	silver	terminal 1	brass	silver
terminal 2	copper alloy	silver	terminal 2	bronze	silver
terminal 3	brass	silver	terminal 3	brass	silver
plastic	PA6T or equivalent		housing	LCP (UL94V-0)	black
			cover	PA6T (UL94V-0)	black



PREVIOUS CUI DEVICES DETAIL / IMAGE					NEW CUI DEVICES DETAIL / IMAGE						
SOLDERABILITY					SOLDERABILITY						
parameter	conditions/description	min	typ	max	units	parameter	conditions/description	min	typ	max	units
reel storage	at relative humidity $\leq 80\%$			40	$^{\circ}\text{C}$	reel storage	$\leq 30^{\circ}\text{C}$, $\leq 80\%$ humidity				$^{\circ}\text{C}$
reflow soldering ¹	see reflow profile	255	260	265	$^{\circ}\text{C}$	reflow soldering ¹	see reflow profile		260		$^{\circ}\text{C}$
drying conditions ²	parts in reel: bake at 40°C $\pm 5^{\circ}\text{C}$ for 72 hours parts removed from reel: bake at 40°C $\pm 5^{\circ}\text{C}$ for 10 hours					drying conditions	parts in reel: bake at $40 \pm 5^{\circ}\text{C}$ for 72 hours parts removed from reel: bake at $40 \pm 5^{\circ}\text{C}$ for 10 hours				
<small>Note:</small> 1. Must reflow solder within 72 hours from opening vacuum packaging at a temperature $\geq 100^{\circ}\text{C}$ @ relative humidity $\leq 80\%$. 2. When exposing from 40 to 100 hours.					<small>Note:</small> 1. CUI Devices recommends to solder within 72 hours from opening vacuum packaging at a temperature $\geq 100^{\circ}\text{C}$ @ relative humidity $\leq 80\%$.						





Affected Date Code: *04/18/2023*

Product Availability: *Pertaining to market availability*

PCN Approval:

Operations/Quality

A handwritten signature in black ink, appearing to read "Rae O'Brien", is written over a solid black horizontal line.

Product Management

A handwritten signature in black ink, appearing to read "J. [unclear]", is written over a solid black horizontal line. The signature is contained within a light gray rectangular box.