

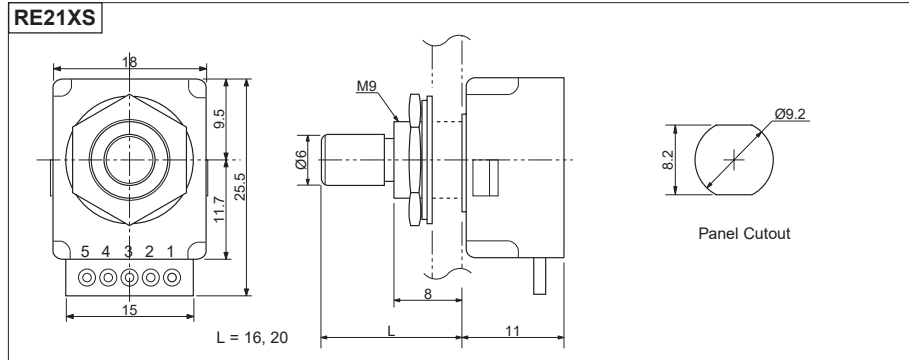
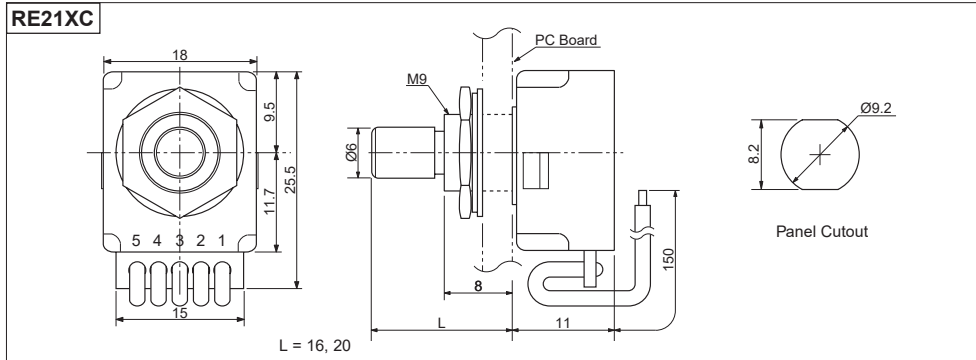
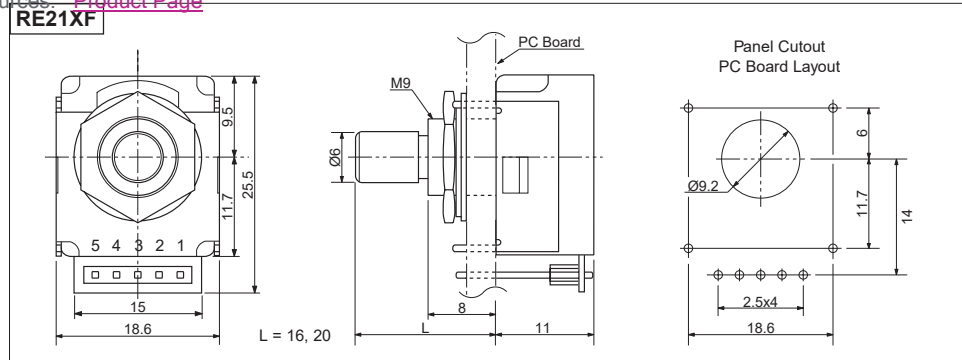
Additional Resources: [Product Page](#)

Panel Mount Encoder

RE21

INTEGRAL PUSH SWITCH

- PUSH SWITCH
- LOW COST
- LONG LIFE
- LOW PROFILE
- DETENT OR FREE
- SHAFT SEAL OPTION
- DURABLE
- IN STOCK NOW



SPECIFICATIONS

ELECTRICAL

- Input Power: 5.0 VDC $\pm 5\%$ @ 20mA
- Output Voltage: H = Vcc- 0.5V
L $\pm 0.4V$
- Resolution: 25 PPR
- Output Type: TTL Compatible
- Max. Freq. Response: 500 Hz

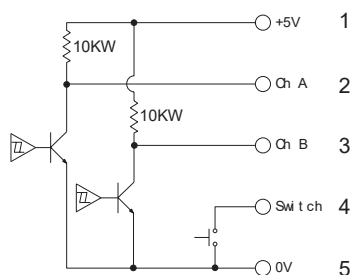
MECHANICAL

- Max Shaft Load, radial: 5.0 kgf
axial: 5.0 kgf
- Rotational Angle: 360° continuous
- Click Torque: 30~70 gf•cm
- Rotational Life: 1,000,000 cycles

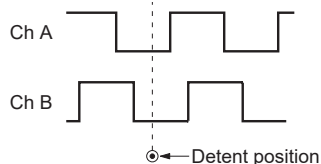
ENVIRONMENTAL

- Operating Temp: 0° to +60° C
- Storage Temp: -20° to +80° C
- Humidity: $\leq 85\%$ RH, no condensation
- Vibration: 10~55 Hz, 1.5 mm, 2 hrs
- Shock: 50G, 6ms, 3 axes, 3 reps

OUTPUT CIRCUIT



OUTPUT WAVEFORM



ORDERING INSTRUCTIONS

RE21 25 R

N = Not waterproof
P = Waterproof

Body Type:
C = Cable type
F = Front mounting
S = Standard

Shaft Length:
16 = 16mm
20 = 20mm

Detent:
C = Click
= No Click

Resolution:
25 = 25 Cycles

Same Sky 6405 SW Rosewood St, Suite C Lake Oswego, OR 97035 www.sameskydevices.com			
DRAWN BY	UPDATED	CHECKED	RELEASED
JRH	09/12/2024	09/01/2020	
PART NO.	RE21XX25XXR		REV. C