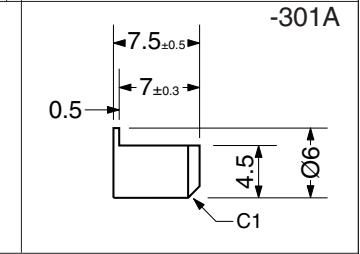
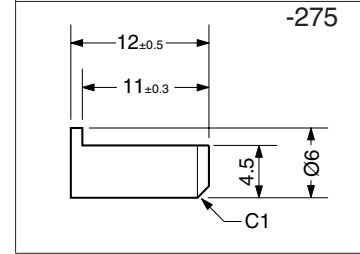
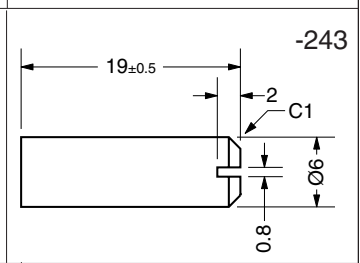
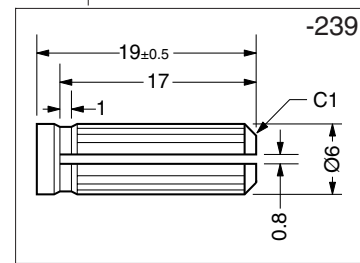
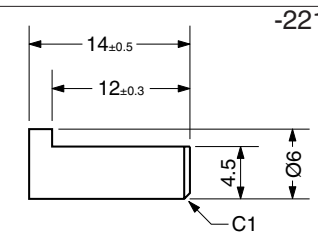
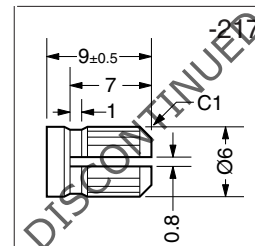
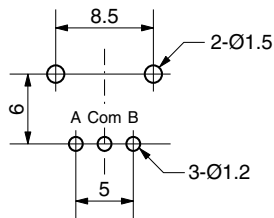


PCB Layout



**SPECIFICATIONS**

**ELECTRICAL**

1. Voltage Rating: 10 VDC
2. Current Rating: 1.0 mA (2.5 mA max)
3. Resolution: 20PPR
4. Insulation Resistance: 500 VDC, 100M
5. Contact Resistance: 1Ω max.

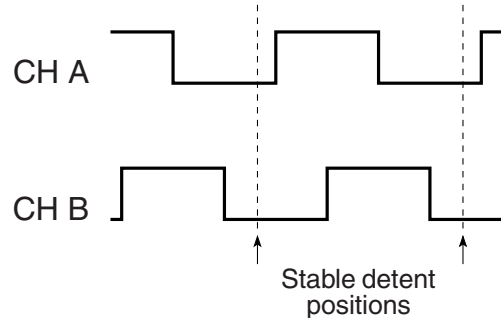
**MECHANICAL**

1. Detent Positions: 20
2. Rotational Torque: 30-200 gf cm
3. Axial Load: 10kgf
4. Rotational Life: 100,000 cycles

**ENVIRONMENTAL**

1. Operating Temp: -10° to +60° C
2. Storage Temp: -40° to +75° C
3. Humidity: 85% RH
4. Vibration: 10 - 55 Hz, 0.75 mm, 2 hrs

**OUTPUT WAVEFORM**

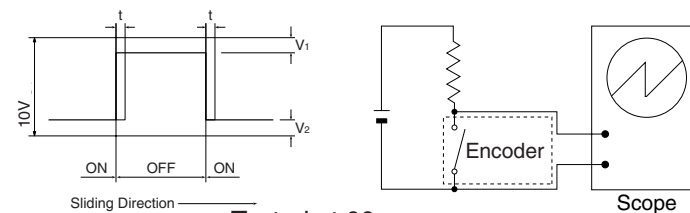


**ORDERING INSTRUCTIONS**  
EC09P20V-XXX

Insert suffix to specify shaft type

**SLIDING NOISE**

$t = 5\text{mS}$  = Masking time to avoid chatter  
 $V_1 = V_2 = 2\text{V max.}$



Tested at 60 rpm

CUI Devices  
6405 SW Rosewood St, Suite C  
Lake Oswego, OR 97035  
[www.cuidevices.com](http://www.cuidevices.com)

DRAWN BY JRH	UPDATED 09/03/20	CHECKED 09/03/20	UNIT MM
PART NO. <b>EC09P20V-XXX</b>			REV. <b>A</b>