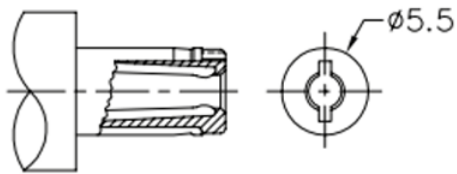
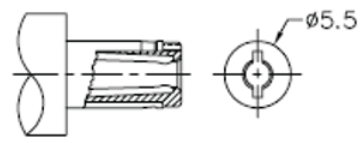




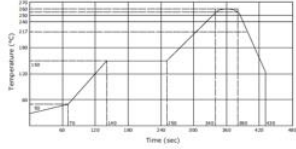
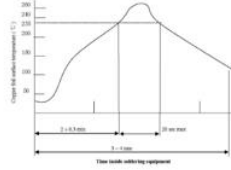
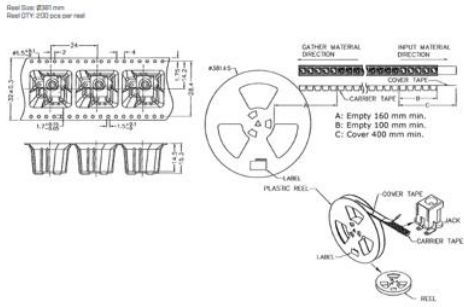
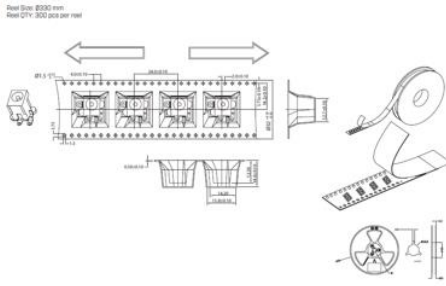
PREVIOUS CUI DEVICES DETAIL / IMAGE			NEW CUI DEVICES DETAIL / IMAGE		
	MATERIAL	PLATING	DESCRIPTION	MATERIAL	PLATING/COLOR
center pin	brass	nickel	center pin	brass	nickel
terminal 1	brass	silver	terminal 1	brass	silver
terminal 2	copper alloy	silver	terminal 2	bronze	silver
terminal 3	brass	silver	terminal 3	brass	silver
plastic	PA6T or equivalent		housing	LCP (UL94V-0)	black
			cover	PA9T (UL94V-0)	black



MATING PLUG  
Jack Insertion Depth: 8.9 mm



MATING PLUG  
Jack Insertion Depth: 8.3 mm

PREVIOUS CUI DEVICES DETAIL / IMAGE					NEW CUI DEVICES DETAIL / IMAGE																																																				
<p><b>SOLDERABILITY</b></p> <table border="1"> <thead> <tr> <th>parameter</th> <th>conditions/description</th> <th>min</th> <th>typ</th> <th>max</th> <th>units</th> </tr> </thead> <tbody> <tr> <td>reel storage</td> <td>at relative humidity &lt;80%</td> <td></td> <td></td> <td>40</td> <td>°C</td> </tr> <tr> <td>reflow soldering<sup>1</sup></td> <td>see reflow profile</td> <td>255</td> <td>260</td> <td>265</td> <td>°C</td> </tr> <tr> <td>drying conditions<sup>2</sup></td> <td>parts in reel: bake at 40±5°C for 72 hours parts removed from reel: bake at 40°C ±5°C for 10 hours</td> <td></td> <td></td> <td></td> <td></td> </tr> </tbody> </table> <p>Note: 1. Must reflow solder within 72 hours from opening vacuum packaging at a temperature &gt;30°C &amp; relative humidity &lt;80%. 2. When exceeding top 90 to &gt;102 hours.</p> 					parameter	conditions/description	min	typ	max	units	reel storage	at relative humidity <80%			40	°C	reflow soldering <sup>1</sup>	see reflow profile	255	260	265	°C	drying conditions <sup>2</sup>	parts in reel: bake at 40±5°C for 72 hours parts removed from reel: bake at 40°C ±5°C for 10 hours					<p><b>SOLDERABILITY</b></p> <table border="1"> <thead> <tr> <th>parameter</th> <th>conditions/description</th> <th>min</th> <th>typ</th> <th>max</th> <th>units</th> </tr> </thead> <tbody> <tr> <td>reel storage</td> <td>&lt;30°C, &lt;80% humidity</td> <td></td> <td></td> <td></td> <td>°C</td> </tr> <tr> <td>reflow soldering<sup>1</sup></td> <td>see reflow profile</td> <td></td> <td></td> <td>260</td> <td>°C</td> </tr> <tr> <td>drying conditions</td> <td>parts in reel: bake at 40±5°C for 72 hours parts removed from reel: bake at 40±5°C for 10 hours</td> <td></td> <td></td> <td></td> <td></td> </tr> </tbody> </table> <p>Note: 1. CUI Devices recommends to solder within 72 hours from opening vacuum packaging at a temperature &gt;30°C &amp; relative humidity &lt;80%.</p> 					parameter	conditions/description	min	typ	max	units	reel storage	<30°C, <80% humidity				°C	reflow soldering <sup>1</sup>	see reflow profile			260	°C	drying conditions	parts in reel: bake at 40±5°C for 72 hours parts removed from reel: bake at 40±5°C for 10 hours				
parameter	conditions/description	min	typ	max	units																																																				
reel storage	at relative humidity <80%			40	°C																																																				
reflow soldering <sup>1</sup>	see reflow profile	255	260	265	°C																																																				
drying conditions <sup>2</sup>	parts in reel: bake at 40±5°C for 72 hours parts removed from reel: bake at 40°C ±5°C for 10 hours																																																								
parameter	conditions/description	min	typ	max	units																																																				
reel storage	<30°C, <80% humidity				°C																																																				
reflow soldering <sup>1</sup>	see reflow profile			260	°C																																																				
drying conditions	parts in reel: bake at 40±5°C for 72 hours parts removed from reel: bake at 40±5°C for 10 hours																																																								
																																																									

Affected Date Code: **04/18/2023**

Product Availability: **Pertaining to market availability**

PCN Approval:

Operations/Quality

Product Management